



Economical Bee Hive Equipment Hand Held And Without Hand Honey Refractometer

Our Product Introduction

for more products please visit us on bee-keepingequipment.com

Basic Information

- Place of Origin: China
- Brand Name: Bee Star
- Model Number: 19TYXK-01, 19YJ-02, 19DC-03
- Minimum Order Quantity: 100pcs
- Price: USD11/PCS-USD14/PCS
- Packaging Details: carton package
- Delivery Time: 10-25 days, depends on your quantity
- Payment Terms: L/C, T/T, Western Union
- Supply Ability: 100pcs per month



Product Specification

- Type: Economical, High Quality And Digital Type
- MOQ: 5pcs And 2pcs
- Origin Of Place: Henan
- Colour: Black
- Highlight: honey bee hive kits, bee hive tool



More Images



Product Description

Economical Bee Hive Equipment Hand Held And Without Hand Honey Refractometer

Specifications of Refractometers:

Item NO.	Type	MOQ	FOB Price (USD/PCS)	Description
19TYXK-01	Economical type, hand held	5pcs	25-22	For measuring the three common indexes of honey. the three common indexes are sugar content, baume degree and water content
19YJ-02	High Quality type, hand held	5pcs	42-39	
19DC-03	Digital type	2pcs	250-230	

PS: The FOB price depends on the quantity of the products which you need!
The more products you need, the cheaper the FOB price will be!

Pictures of Economical And High Quality, Hand Held And Without Hand Honey Refractometer:

Economical type, hand held refractometer:



High quality hand held honey refractometer:



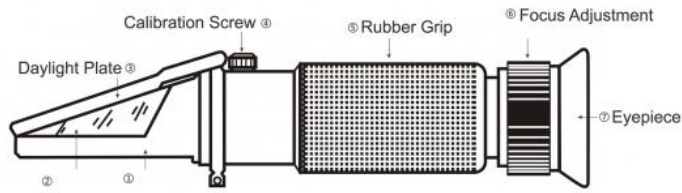
Digital honey refractometer:



The Instruction Paper of Refractometer:

HONEY REFRACTOMETER MANUAL

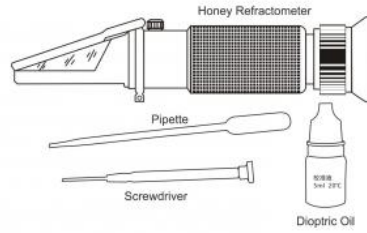
PARTS:



CALIBRATION PROCESS

STEP 1:

Get the calibration tools ready: Honey Refractometer, Pipette, Dioptric Oil, and Screwdriver.



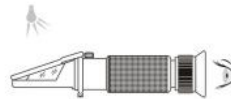
STEP 2:

Drop 2-3 drops of correction fluid onto the prism and gently press the cover to ensure no bubbles.



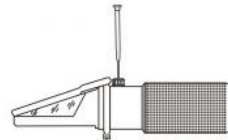
STEP 3:

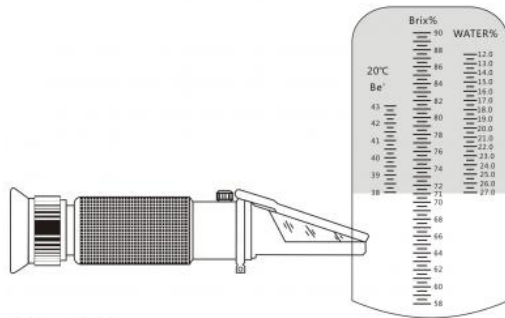
Aim the front end of the refractometer to the direction of light, and look into the eyepiece to check the reading.



STEP 4:

Rotate and adjust the calibration screw to make the light & blue boundary coincide with the reference line Brix 71%.

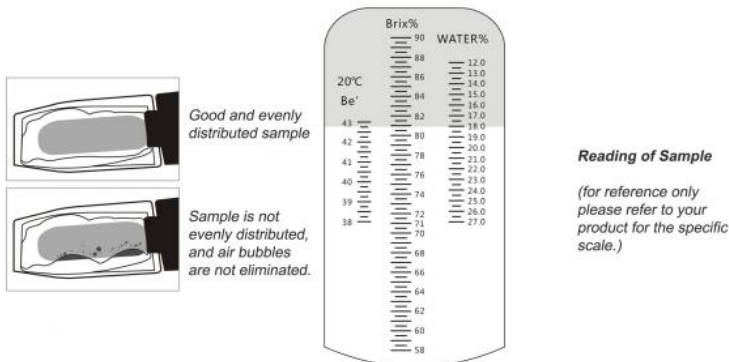




The Honey Refractometer's calibration process is now done.

OPERATION

Place few drops of the sample to be tested on the main prism, and close the daylight plate. Make sure the sample is evenly distributed and air bubbles are eliminated on prism. Aim the front end of the refractometer to the direction of light. Take the reading where the boundary line of blue and white cross the graduated scale. The scale will provide a direct reading of the concentration



WARNING - MAINTENANCE

1. Accurate measurement depends on careful calibration. The prism and sample must be at the same temperature for accurate results.
2. Do not expose the instrument to damp working conditions, and do not immerse the instrument in water. If the instrument becomes foggy, water has entered the body. Call a qualified service technician or contact your dealer.
3. Do not measure abrasive or corrosive chemicals with this instrument. They can damage the prism's coating.
4. Clean the instrument between each measurement using a soft, damp cloth. Failure to clean the prism on a regular basis will lead to inaccurate results and damage to the prism's coating.
5. This is an optical instrument, it requires careful handling and storage. Failure to do so can result in damage to the optical components and its basic structure. With care, this instrument will provide years of reliable service.

Packing and Delievry:

All the products of economical type hand held, high quality hand held and digital honey refractometers are packaged with cartons. The packages of our products are safe, you could trust our service!



F.A.Q.

1. Are You Factory/Manufacturer or Trading Company?

We are a factory for beekeeping products in China with over 10 years experience. You can trust the quality and price of our products.

2. Do You Offer OEM/ODM Service?


Yes, we have a rich experience in offering OEM/ODM service in some of our products. Design service offered. Buyer label offered.

3. What is your MOQ? Can we get a small order for the first time?

Of course, you can. But we can't send small quantity by sea, so the price will be a little higher than larger quantity.


4. How About the Shipping Cost?

If the order is not large, we can send goods to you through air or express shipping methods such as FEDEX or DHL. If your order is large, we will send it to you by sea. Once the order is placed, we will quote the price to you. Generally, we always choose the most price-efficient option for you!

 **BEE STAR TO GLORIFY YOUR WONDERFUL HONEY LIFE**

 0086 18582997231

 cherrybeekeeping@myldhoney.com

 bee-keepingequipment.com

No. 21, 3rd Floor, Building 1, No. 888 Jilong Road, Chengdu High tech Zone, China